

# ***KillTest***

***Mejor calidad Mejor servicio***



## ***Examen***

<http://www.killtest.es>

***Renovación gratuita dentro de un año***

**Exam** : **050-877**

**Title** : cni-foundations of novell  
networking:netware 6

**Version** : DEMO

1.Which is the top-most object in the eDirectory tree?

- A.Tree object
- B.Domain object
- C.Country object
- D.Organization object

Correct:A

2.Click the Drag-and-Drop button to begin. Match each NetWare 6 feature with its description.

**Descriptions**

place here	Allows printing access through a web browser from any location
place here	Provides fault tolerance to an eBusiness infrastructure
place here	Provides mobile users with internet access to network resources and information
place here	Provides access to personal files from any location and automatic synchronization between revisions

**Features**

iFolder	WebAccess	iPrint	Cluster Services
---------	-----------	--------	------------------

Correct:

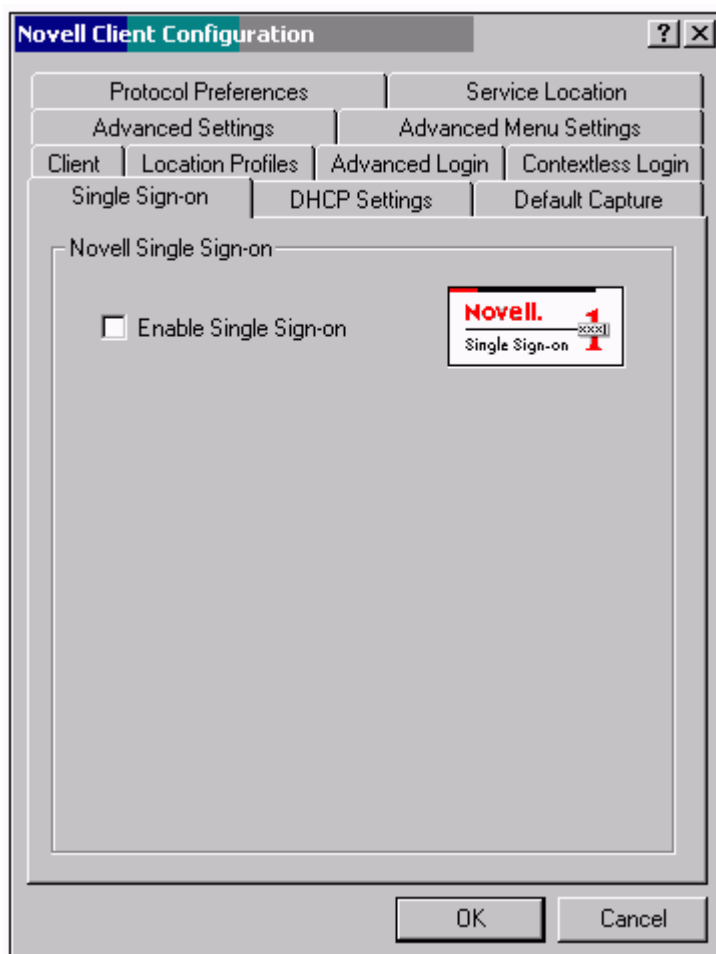
Green choice3---->Yellow Choice1

Green choice4---->Yellow Choice2

Green choice2---->Yellow Choice3

Green choice1---->Yellow Choice4

3.Click the Exhibit Button to Begin. The Exhibit contains the Novell Client for Windows 2000 property page. Which tab allows you to control the configuration setting of Network Neighborhood to hide the server page?



- A.Client
- B.Advanced Login
- C.Default Capture
- D.Location Profiles
- E.Advanced Menu Settings

**Correct:E**

**4.What is used to load the print service manager?**

- A.iManager
- B.ConsoleOne
- C.NDPS Broker
- D.Server console prompt

**Correct:D**

**5.Someone is trying to access your network by logging in as Admin. Which is the simplest and most effective method for preventing this type of security breach?**

- A.Hide the Admin object.
- B.Rename the Admin object.
- C.Use an IRF to prohibit global access.
- D.Place an intruder detection limit on the Admin account.
- E.Make another user security equivalent to the Admin object.

**Correct:B**

**6.Which statements are true regarding setting identifier variables in login scripts? (Choose 2.)**

- A.They must be written in initial caps.
- B.They must be written in lower case.
- C.They must be written in upper case.
- D.They must preceded by the pound (#) sign.
- E.They must be preceded by the percent (%) sign.
- F.They must be preceded by the underscore (\_) sign.

**Correct:C E**

**7.The Rhernandez user object exists in the DEL.DIGITALAIR container. Which is an example of a typeless distinguished name for Rhernandez?**

- A.RHERNANDEZ..
- B.CN=RHERNANDEZ
- C.RHERNANDEZ.DIGITALAIR
- D..RHERNANDEZ.DEL.DIGITALAIR
- E..CN=RHERNANDEZ.OU=DEL.O=DIGITALAIR

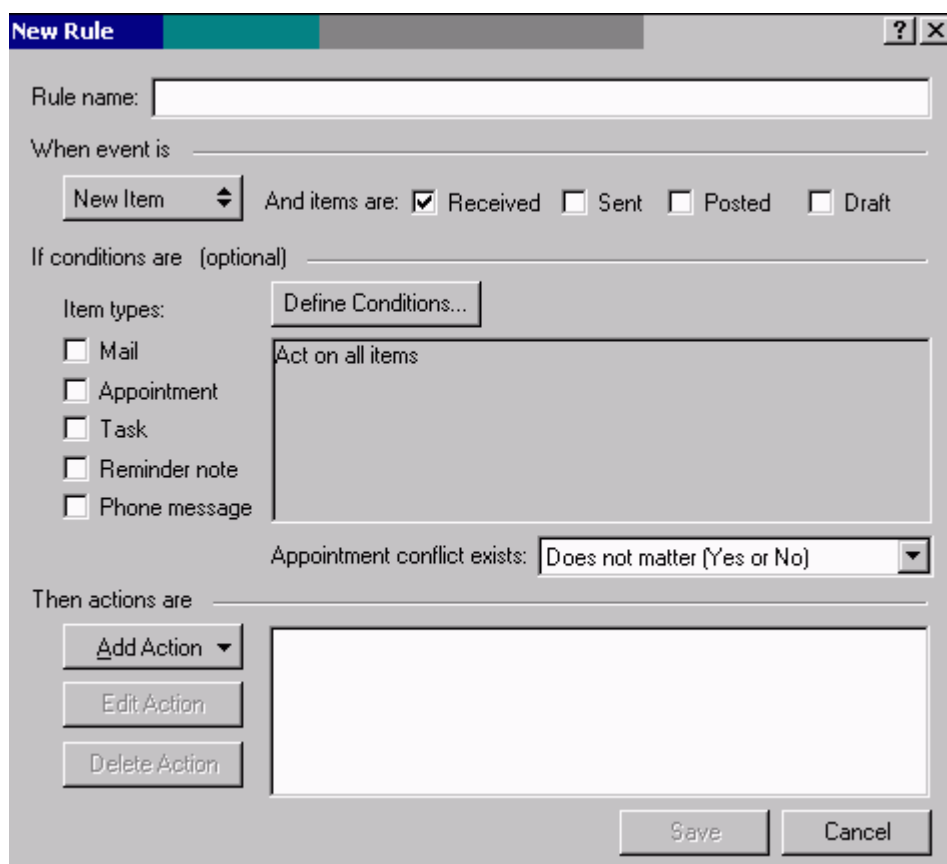
**Correct:D**

**8.Which statements regarding login scripts are true? (Choose 2.)**

- A.The default login script can be edited.
- B.Only one profile login script per user is allowed.
- C.It is recommended to use user login scripts rather than container login scripts.
- D.If the user login script is executed, the default login script is never executed.
- E.Even if a user's parent container does not have a login script, a different container login script can be executed for that user.

**Correct:B D**

**9.Click the Point-and-Click button to begin. You are setting up a GroupWise rule to forward all messages received from your manager. Click the button or option that allows you to forward the message.**



**Correct:**

**10. You are using the default configuration on your server. To access Web Manager from your workstation, you open a browser, enter the server's IP address, and then enter which port number?**

- A.443
- B.636
- C.2200
- D.8008
- E.8009

**Correct:C**

**11. Which MAP command creates a search drive in the last possible search position?**

- A.MAP L16:=.volume.ou.organization:path
- B.MAP S16:=.volume.ou.organization:path
- C.MAP S16:=.path:volume.ou.organization
- D.MAP S26:=.volume.ou.organization:path
- E.MAP S26:=.path:volume.ou.organization

**Correct:B**

**12. Which statements are true regarding the Public trustee? (Choose 2.)**

- A.The Public trustee is the tree object.
- B.By default, all eDirectory objects are security equivalent to Public.
- C.By default, Public allows users to view any other object in the tree before authenticating.
- D.By default, users must be authenticated before receiving rights through the Public trustee.
- E.Any rights assigned by the tree object take precedence to rights assigned by the Public trustee.

**Correct: B C**

**13. In an NDPS environment, which type of notification needs to be configured for a printer operator to be notified when intervention is required?**

- A. Popup
- B. Log-file
- C. Job-owner
- D. Programmatic
- E. Interested-party

**Correct: E**

**14. Which email program only offers a client side (front-end) application?**

- A. Lotus
- B. Eudora
- C. Exchange
- D. GroupWise

**Correct: B**

**15. How are file system effective rights calculated?**

- A. All rights granted to the user explicitly and through other objects, minus IRFs
- B. Between explicit assignments and assignments through other objects the most restrictive rights are applied, minus IRFs
- C. Between explicit assignments and assignments through other objects the least restrictive rights are applied, minus IRFs
- D. The least restrictive rights granted to the user through eDirectory and the most restrictive granted to the user through the file system, minus IRFs

**Correct: A**

**16. In an NDPS printing environment, which utility do you use to configure event notification?**

- A. iMonitor
- B. iManager
- C. ConsoleOne
- D. Remote Manager
- E. NetWare Administrator

**Correct: E**

**17. Which objects can be children of the tree object? (Choose 2.)**

- A. Admin
- B. Country
- C. Organization
- D. License Container
- E. Organizational unit

**Correct: B C**

**18. Which are characteristics of a controlled access printer? (Choose 2.)**

- A. It has low security.
- B. It provides plug-and print capabilities.
- C. It allows for little administrative configuration.
- D. It is created and administered as an eDirectory object.
- E. It offers a full range of event and status notification options.

**Correct: D E**

**19.Which utility's only function is to set directory and file attributes?**

- A.Flag
- B.Filer
- C.NDIR
- D.NCOPY

**Correct:A**

**20.Enter the console command that improves security by not allowing a malicious NLM to be run from the floppy disk drive. Answer:**

- A.SECURECONSOLE

**Correct:A**