

KillTest

Mejor calidad Mejor servicio



Examen

<http://www.killtest.es>

Renovación gratuita dentro de un año

Exam : **000-012**

Title : IBM Tivoli Usage &
Accounting Manager V7.1
Implementation

Version : Demo

1. Which two processing files should be reviewed for database size estimation? (Choose two.)

- A.job log file
- B.AcctCSR.txt
- C.yyyymmdd.txt
- D.Exceptions.txt
- E.CurrentCSR.txt

Answer: AB

2. What is the maximum number of bytes an account code can contain?

- A.8
- B.96
- C.127
- D.unlimited

Answer: C

3. What is the purpose of CPU normalization within IBM Tivoli Usage and Accounting Manager V7.1?

- A.to not charge for CPU utilization
- B.to charge less for CPU utilization
- C.to charge more for CPU utilization
- D.to charge evenly for CPU utilization

Answer: D

4. Using the IBM Tivoli Usage and Accounting Manager V7.1 Integrated Solutions Console, where are the rate tables assigned to the clients in the Client table?

- A.Chargeback Maintenance Rates
- B.Chargeback Maintenance Clients
- C.System Maintenance Users Groups
- D.Chargeback Maintenance Rate Groups

Answer: B

5. Using the database collector input, what happens to the selected data during Integrator input processing?

- A. Identifiers and resources are validated.
- B. The select output is written into a CSR file.
- C. Data fields are mapped to identifiers or resources.
- D. Resources with the same identifiers are aggregated.

Answer: C

6. What is the benefit of CSR+ Output as an Integrator output stage?

- A. More detailed data is written to the CSR files.
- B. Additional aggregation is done for the CSR file.
- C. The order of files is optimized for the next step.
- D. Index data is added in the header of the CSR record.

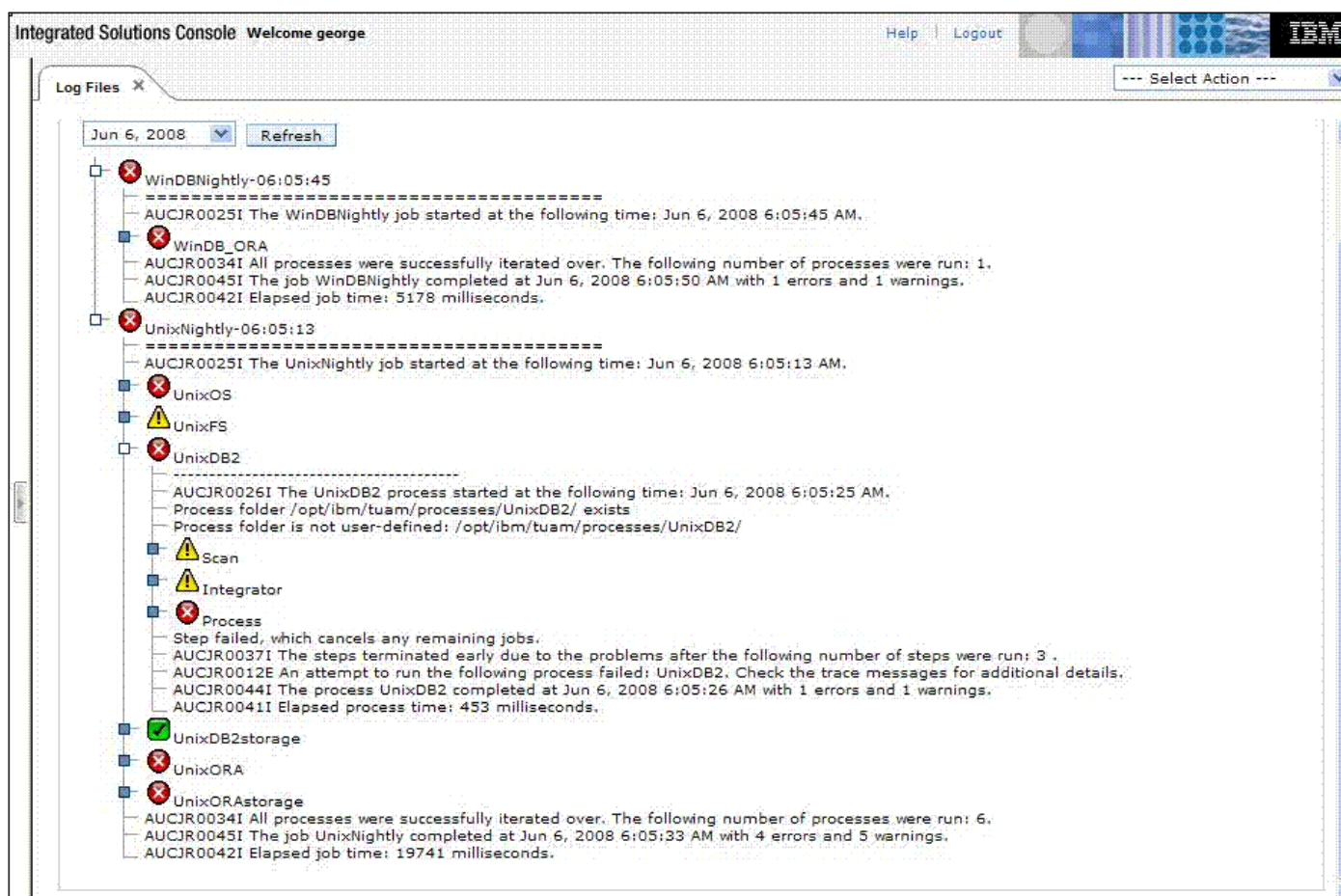
Answer: D

7. Click the Exhibit button.

In the Log Files panel displayed in this exhibit, the UnixDB2 process ended with a process failure.

In which step did the failure occur?

- A. UnixOS
- B. Process
- C. Integrator
- D. UnixNightly



Answer: B

8. Which IBM Tivoli Usage and Accounting Manager V7.1 panel is selected to set the Trace Message and Log Message level?

- A. Troubleshooting Transactions Logging
- B. Troubleshooting Configuration Logging
- C. System Maintenance Transactions Logging
- D. System Maintenance Configuration Logging

Answer: D

9. When identifying data sources and corresponding collectors, which collector does a CSV data source require?

- A. WinDisk
- B. WinProcess

C.StandardCollector

D.UniversalCollector

Answer: D

10. Which core software for the Web Reporting Server is required to be installed?

A.SQL

B.WebSphere

C.Integrated Solutions Console

D.Microsoft Internet Information Server (IIS)

Answer: D